

BĪJOU
FREEHOLD

BĪJOU

FREEHOLD

/ LOCALE /

D5

120



LIFELONG

Freehold at Pasir Panjang, close to Sentosa, Resorts World Sentosa, the CBD, Kent Ridge and Labrador Parks

LIMITED

Just 120 units available in this low-rise 5-storey development

CONNECTED

Integrated retail with future direct link to Pasir Panjang MRT

EXCEPTIONAL

Stylish, post-industrial façade unveils a French-inspired inner garden wrapped around a rooftop pool and gym

ARTISANAL

Handpicked F&B, gourmet dining and retail stores at ground level

/ CONNECTIVITY /



Café/Retail/MRT

/ SPACE /



DISCOVER THE POTENTIAL OF WHAT'S TO COME

BIJOU, a development where sophisticated living transcends into an expression of one's individuality. Where urban, post-industrial New York-inspired chic is married with modern French elements. Creating something artisanal, unique and unexpected.

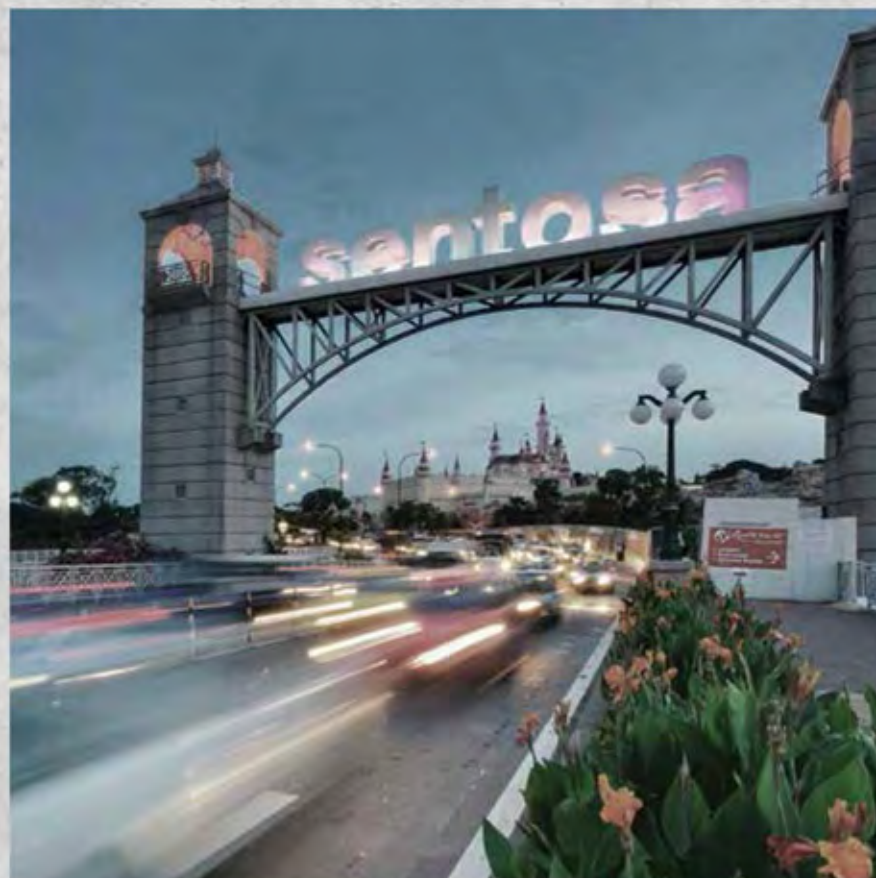


AN INSPIRED VISION

Be part of a diverse group of individuals in this up-and-coming **LOCALE**, where opportunity awaits.

Enjoy the commute between this trendsetting neighbourhood and the city with a network of **CONNECTIVITY**.

Create your own **SPACE** where definitive style meets comfort in a home you can call your own.



DISCOVER LOCALE

As Pasir Panjang slowly evolves from an element of Singapore's heritage into a trendsetting district of its own, explore intriguing new frontiers with BIJOU.

For moments of quiet introspection, Labrador and Kent Ridge Parks are within the immediate vicinity – spaces of calming, lush greenery within an urban metropolis.

Within a few minutes' drive are world-class entertainment venue Resorts World Sentosa, Singapore's largest lifestyle and retail destination VivoCity shopping mall and vibrant business hub Mapletree Business City – evolving the way you live, work and play.

BIJOU – A dynamic new expression of modern living in Singapore.

DISCOVER CONNECTIVITY

With the unexpected comes exhilarating new experiences. Revealing the multi-faceted lifestyle offerings within – a select choice of retail and F&B establishments surround the core of the development. Where shopping and dining are just a few steps away from your door.

Discover direct accessibility that naturally transitions outwards of home – a convenient passageway brings the MRT network almost to your doorstep, keeping you effortlessly connected to the rest of the city.

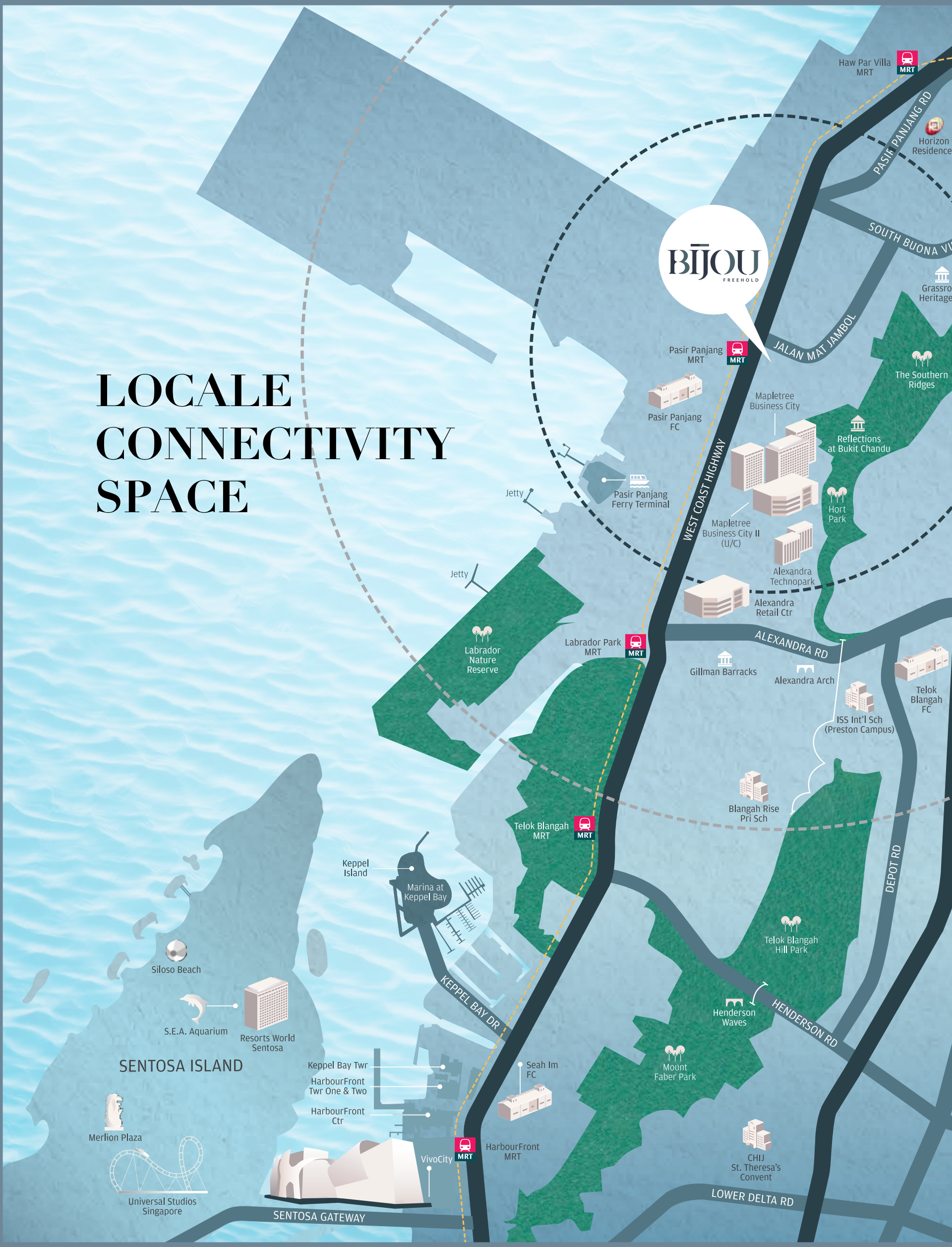
Fringing the CBD, BIJOU is just a 13-minute drive away from Marina Bay Financial Centre.

BIJOU – Bringing the city closer to you.

- 1** min drive to Mapletree Business City
- 1** min drive to Raffles Medical (Pasir Panjang)
- 3** mins walk to Pasir Panjang MRT Station
- 3** mins drive to West Coast Highway
- 5** mins drive to National University of Singapore
- 6** mins drive to VivoCity
- 9** mins drive to Singapore Polytechnic
- 9** mins drive to Resorts World Sentosa
- 13** mins drive to Marina Bay Financial Centre
- 13** mins drive to Raffles Place



LOCALE CONNECTIVITY SPACE





FOR EAST
SO/HO
SINGAPORE OFFICES

Mediapolis
@ one-north

one-north

Holland Village

Dempsey Hill

Singapore
Botanic Gardens



200 m



DISCOVER *TRUE EXPRESSION* OF SPACE

A dainty piece of workmanship, akin to the delicate intricacies of a jewel. Here is where luxury meets creativity with French-inspired garden landscapes and a serene central courtyard.

Welcome to an area of self-expression that you can call home, with high-ceiling unit choices comprising 1-bedroom and 2-bedroom Compact and Dual Key options for 2-bedroom and 4-bedroom Compact.

Spaces that celebrate a balanced way of life – the attic units afford you the luxury of direct access to the communal rooftop garden, lap pool and gym.

BIJOU – Experience a more creative way of living.

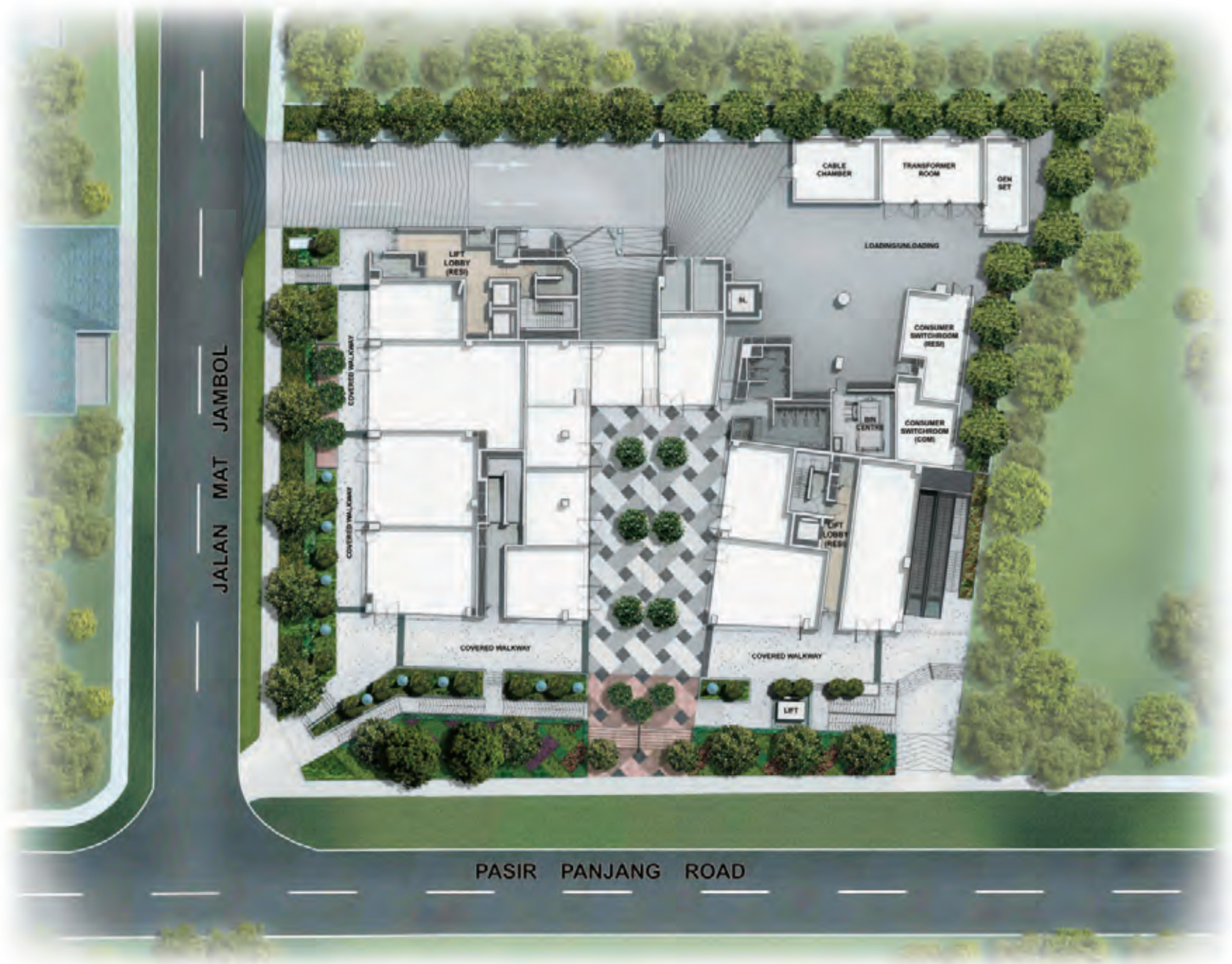
TABLE OF CONTENTS

Pg 1: 1st Storey Plan

Pg 2: 2nd Storey Plan

Pg 3: Roof Plan

Unit No.	Type	Page	Unit No.	Type	Page	Unit No.	Type	Page	Unit No.	Type	Page
#02-01	2brc	21	#03-01	2brc	21	#04-01	2brc	21	#05-01	2brc	20
#02-02	2brc	20	#03-02	2brc	20	#04-02	2brc	20	#05-02	2brc	19
#02-03	2brc	18	#03-03	2brc	18	#04-03	2brc	18	#05-03	2brc	19
#02-04	2brc	5	#03-04	2brc	10	#04-04	2brc	11	#05-04	4brc Attic	32
#02-05	2brc	5	#03-06	2brc	11	#04-05	2brc	12	#05-05	2br Attic	26
#02-08	2brc	6	#03-07	2brc	12	#04-06	2brc	11	#05-06	2br Attic	27
#02-09	2brc	6	#03-08	2brc	13	#04-07	2brc	12	#05-07	2br Attic	28
#02-10	2brc	7	#03-09	2brc	14	#04-08	2brc	13	#05-08	2br Attic	28
#02-11	2brc	8	#03-11	2brc	12	#04-09	2brc	14	#05-09	2br Attic	27
#02-14	2brc	21	#03-12	2brc	15	#04-10	2brc	13	#05-10	2br Attic	29
#02-15	2brc	21	#03-16	2brc	25	#04-11	2brc	12	#05-11	2br Attic	29
#02-16	2brc	21	#03-17	2brc	15	#04-14	2brc	25	#05-13	2br Attic	26
#02-18	2brc	7	#03-18	2brc	13	#04-15	2brc	25	#05-14	2br Attic	26
#02-19	2brc	8	#03-21	2brc	16	#04-16	2brc	25	#05-17	1br	4
#02-20	2brc	7	#03-22	2brc	16	#04-17	2brc	15	#05-18	2brc	25
#02-21	2brc	8	#03-25	2brc	17	#04-18	2brc	13	#05-19	2brc	25
#02-23	2brc	9	#03-26	2brc	24	#04-19	2brc	12	#05-20	2brc	25
#02-24	2brc	9	#03-27	2brc	23	#04-21	2brc	16	#05-24	2br Attic	26
#02-25	2brc	10	#03-28	2brc	22	#04-23	2brc	17	#05-27	2br Attic	30
#02-26	2brc	24				#04-24	2brc	17	#05-30	2br Attic	30
#02-27	2brc	23				#04-25	2brc	18	#05-31	2br Attic	31
#02-28	2brc	22				#04-26	2brc	24	#05-33	4brc Attic	32
						#04-27	2brc	23	#05-34	2brc	24
						#04-28	2brc	22	#05-35	2brc	23
									#05-36	2brc	22



1st STOREY PLAN





LEGEND

- ① Seating Courtyard
- ② Central Water Court

2nd STOREY PLAN





LEGEND

- | | | |
|-------------------|-------------------|------------|
| ① Dining Pavilion | ⑤ Seating Terrace | ⑨ Sun Deck |
| ② Toilet | ⑥ Kids Play Area | ⑩ Lap Pool |
| ③ Lounge Pavilion | ⑦ Steam Rooms | ⑪ Jacuzzi |
| ④ Gymnasium | ⑧ Function Room | |

ROOF PLAN





VIEW OF PLATFORM



KEY PLAN

Unit 17 is highlighted with a shaded pattern.



Scale: 1:1000
 All dimensions are in meters unless otherwise specified.

TYPE SHA1

#05-17

2 JALAN MAT JAMBOL



VIEW OF PLATFORM

TYPE SHBc1(t)

#02-04

2 JALAN MAT JAMBOL



VIEW OF PLATFORM

TYPE SHBc2(t)

#02-05

2 JALAN MAT JAMBOL



KEY PLAN

THIS KEY PLAN IS NOT TO SCALE



SCALE
 Disclaimer: The above plan is subject to any amendments as may be approved by the relevant authorities.

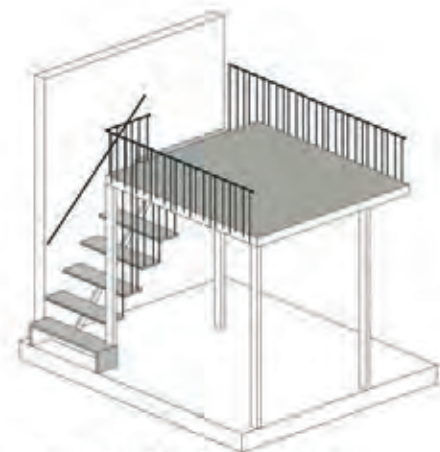


VIEW OF PLATFORM

TYPE SHBc4(t)

#02-08

2 JALAN MAT JAMBOL



VIEW OF PLATFORM

TYPE SHBc5

#02-09

2 JALAN MAT JAMBOL

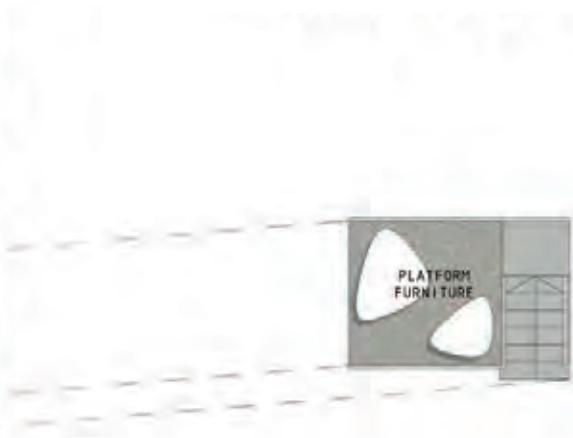


KEY PLAN

This key plan is not to scale



Disclaimer: The above plan is subject to any amendments as may be approved by the relevant authorities.

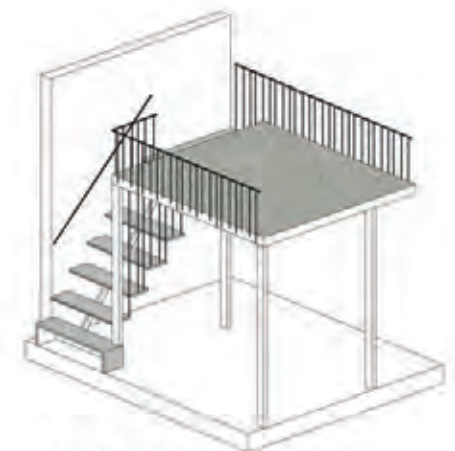
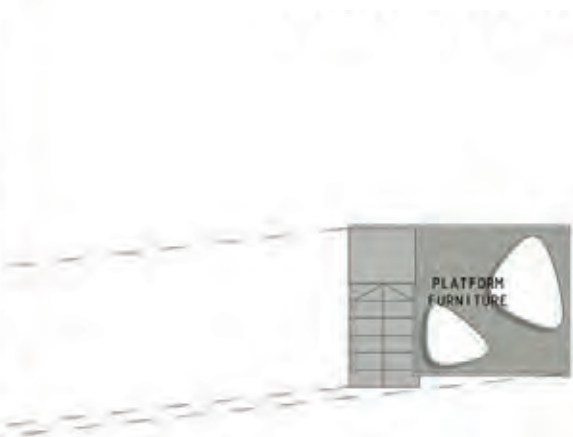


VIEW OF PLATFORM

TYPE SHBc5a

#02-20

2 JALAN MAT JAMBOL



VIEW OF PLATFORM

TYPE SHBc6

#02-10, #02-18

2 JALAN MAT JAMBOL



KEY PLAN

(SEE KEY PLAN TO GET TO UNIT)



SCALE
 Disclaimer: This floor plan is subject to any amendments as may be approved by the relevant authorities.



VIEW OF PLATFORM

TYPE SHBc6

#02-11, #02-19

2 JALAN MAT JAMBOL



VIEW OF PLATFORM

TYPE SHBc8

#02-21

2 JALAN MAT JAMBOL



KEY PLAN

Take the grid to get to unit



Distances are shown in meters to the nearest 5m. All distances are approximate and may be subject to change without notice.



TYPE SHBc9

#02-23

2 JALAN MAT JAMBOL



VIEW OF PLATFORM



TYPE SHBc9(t)

#02-24

2 JALAN MAT JAMBOL



VIEW OF PLATFORM



KEY PLAN

This key plan is not to scale



NOTES:
 1. All dimensions are in millimeters.
 2. All dimensions are to be confirmed by the relevant authorities.

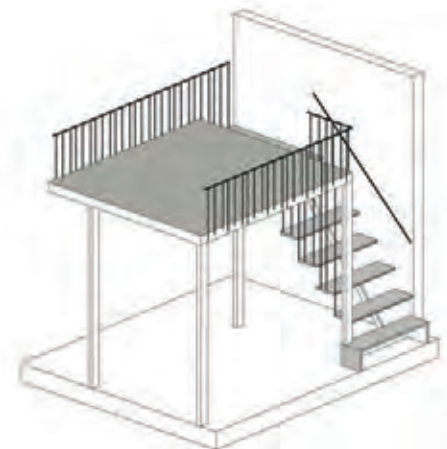


VIEW OF PLATFORM

TYPE ShBc 10

#02-25

2 JALAN MAT JAMBOL



VIEW OF PLATFORM

TYPE ShBc 11

#03-04

2 JALAN MAT JAMBOL

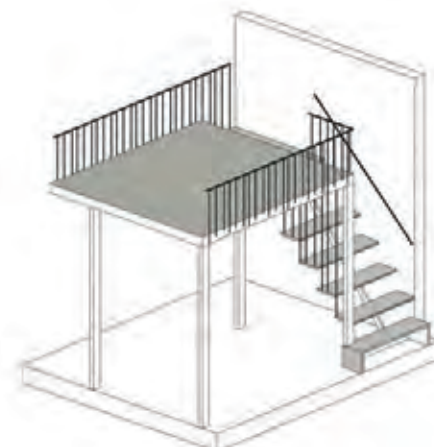
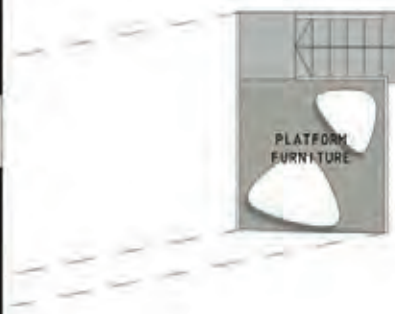


KEY PLAN

This key plan is not to scale.



NOTE:
 This key plan is subject to any amendments or may be approved by the relevant authorities.



VIEW OF PLATFORM

TYPE SHBc 11a

#04-04

2 JALAN MAT JAMBOL



VIEW OF PLATFORM

TYPE SHBc 12

#03-06

#04-06

2 JALAN MAT JAMBOL

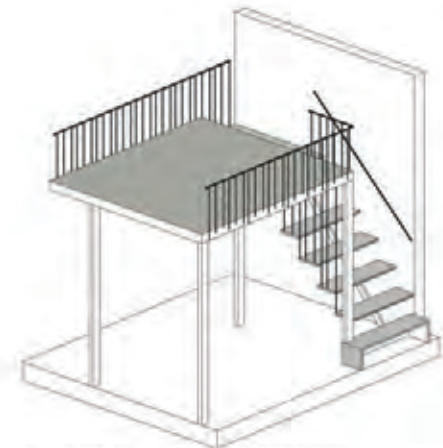


KEY PLAN

This key plan is for the site.



Disclaimer: The above plan is subject to any amendments or modifications to the relevant authorities.



VIEW OF PLATFORM

TYPE SHBc 12

#04-05

2 JALAN MAT JAMBOL



VIEW OF PLATFORM

TYPE SHBc 13

#03-07, #03-11,
#04-07, #04-11, #04-19

2 JALAN MAT JAMBOL



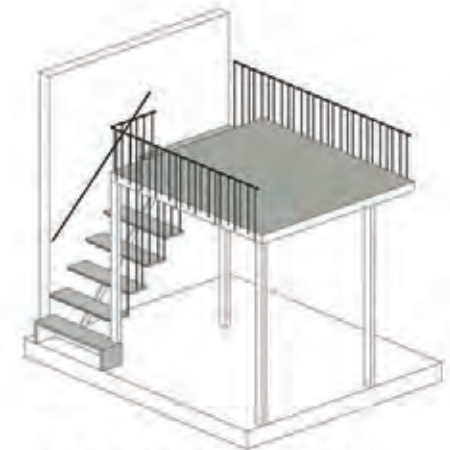
KEY PLAN

This key plan is NOT to scale



SCALE

Disclaimer: This key plan is subject to any amendments or may be approved by the relevant authorities.



VIEW OF PLATFORM

TYPE SHBc 13

#03-18,
#04-10, #04-18

2 JALAN MAT JAMBOL



VIEW OF PLATFORM

TYPE SHBc 14

#03-08,
#04-08

2 JALAN MAT JAMBOL



KEY PLAN

10/20/40/60/80/100/120/140/160/180/200



NOTES: The above plan is subject to any amendments or may be approved by the relevant authorities.

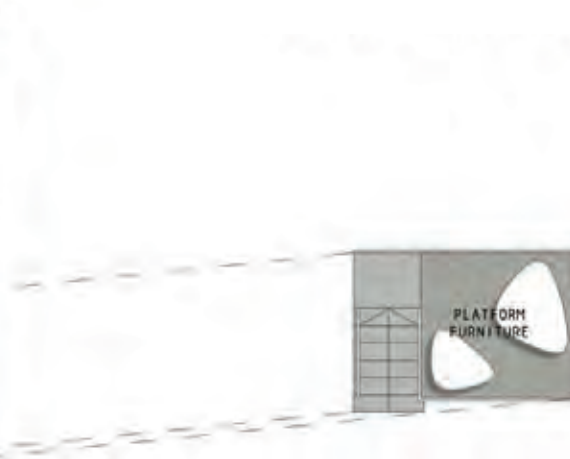


VIEW OF PLATFORM

TYPE SHBc 15

#03-09

2 JALAN MAT JAMBOL



VIEW OF PLATFORM

TYPE SHBc 15b

#04-09

2 JALAN MAT JAMBOL



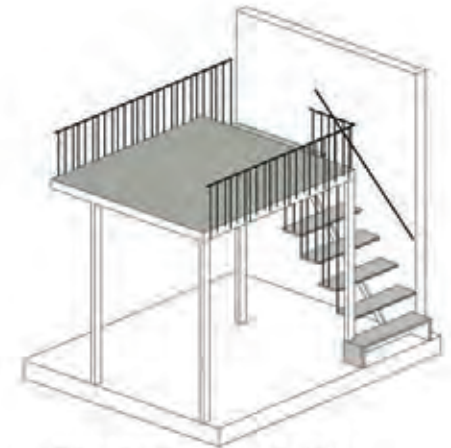
KEY PLAN

Unit No. 0101 to 0128

0 5 10 15 20 25 30 M

SCALE

1:1000 - This plan is for reference only.
 It is not intended to be used for construction.
 The actual construction shall be as per the approved drawings.

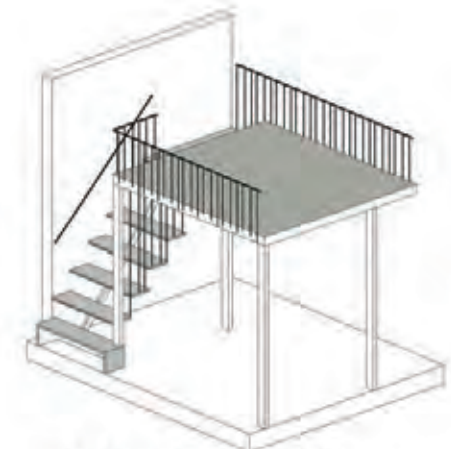


VIEW OF PLATFORM

TYPE SHBc 16

#03-12

2 JALAN MAT JAMBOL



VIEW OF PLATFORM

TYPE SHBc 16

#03-17,
#04-17

2 JALAN MAT JAMBOL



KEY PLAN

Take key plan as ref. to units



Disclaimer: The above plan is subject to any amendments, as may be approved by the relevant authorities.



VIEW OF PLATFORM

TYPE SHBc 17

W03-21
W04-21

2, JALAN MAT JAMBOL



VIEW OF PLATFORM

TYPE SHBc 18

W03-22

2, JALAN MAT JAMBOL



KEY PLAN

This key plan is not to scale.



Disclaimer: This floor plan is subject to any amendments as may be approved by the relevant authorities.

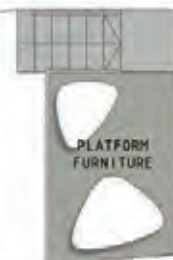


VIEW OF PLATFORM

TYPE SHBc 18

#04-23, #04-24

2 JALAN MAT JAMBOL



VIEW OF PLATFORM

TYPE SHBc 19

#03-25

2 JALAN MAT JAMBOL



KEY PLAN

This key plan is valid for 2023



DISCLAIMER: This floor plan is subject to any amendments as may be approved by the relevant authorities.

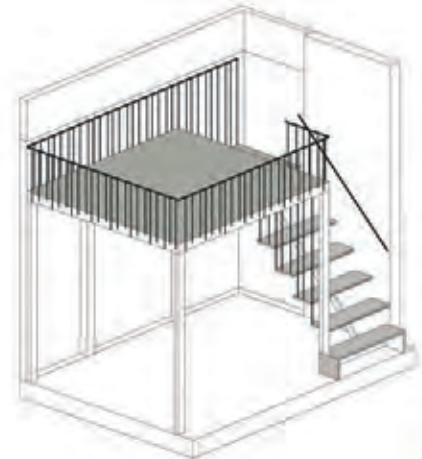


VIEW OF PLATFORM

TYPE SHBc 19a

#04-25

2 JALAN MAT JAMBOL



VIEW OF PLATFORM

TYPE SHBc 20

#02-03,

#03-03,

#04-03

2 JALAN MAT JAMBOL

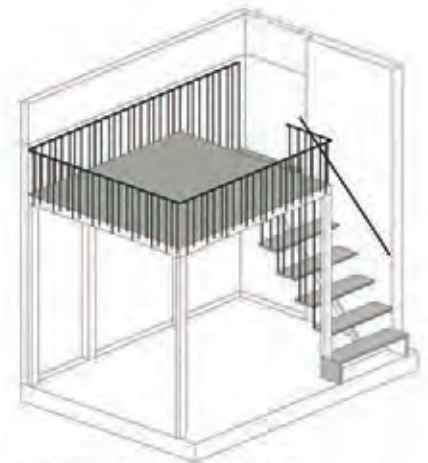


KEY PLAN

This key plan is not to scale



Disclaimer: The above plan is subject to any amendments as may be approved by the relevant authorities.

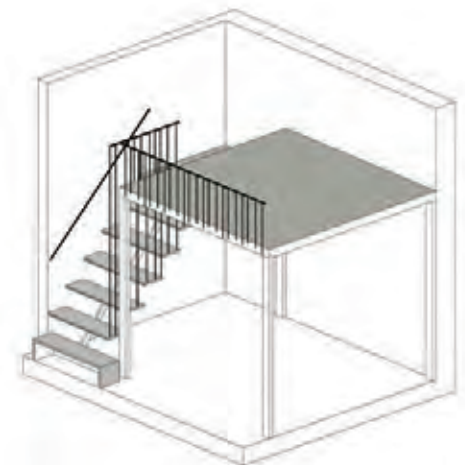


VIEW OF PLATFORM

TYPE SHBc20

#05-03

2 JALAN MAT JAMBOL



VIEW OF PLATFORM

TYPE SHBc21

#05-02

2 JALAN MAT JAMBOL

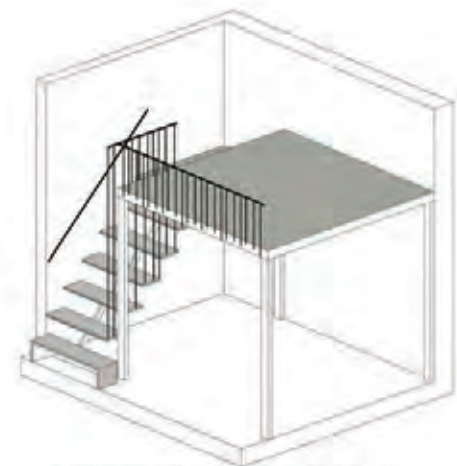


KEY PLAN

This key plan is not to scale.



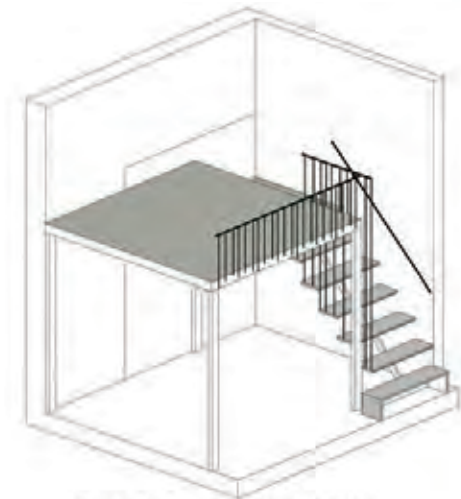
Unit number: 05-0505-01 to 0505-01
 16.00 sqm (unit area) or 16.00 sqm (total area)
 The program is subject to change.



VIEW OF PLATFORM

TYPE SHBc21

#02-02
 #03-02
 #04-02
 2 JALAN MAT JAMBOL



VIEW OF PLATFORM

TYPE SHBc22

#05-01
 2 JALAN MAT JAMBOL



KEY PLAN

This key plan is for the 1st floor



Disclaimer: This key plan is subject to any amendments to may be approved by the relevant authorities.



5th Storey KEY PLAN

This key plan is for the 5th floor



Disclaimer: This key plan is subject to any amendments to may be approved by the relevant authorities.



VIEW OF PLATFORM

TYPE SHBc22

#02-01,
#03-01,
#04-01
2 JALAN MAT JAMBOL



VIEW OF PLATFORM

TYPE SHBc23

#02-14, #02-15, #02-16

2 JALAN MAT JAMBOL

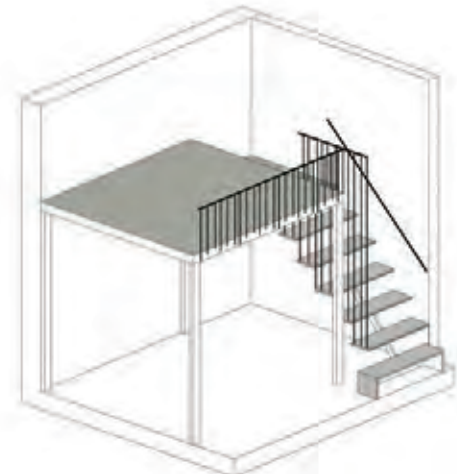


KEY PLAN

Showing plan of unit 14



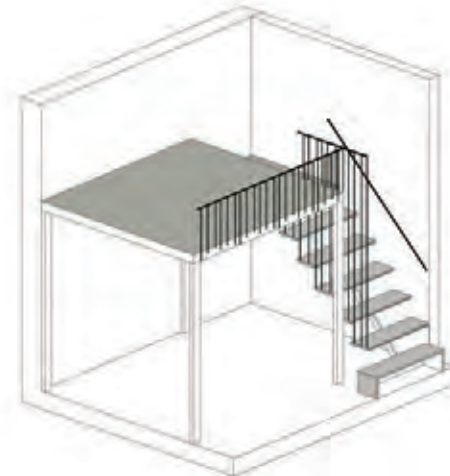
Dimensions are shown in millimeters
in any dimension as may be required by
the relevant authorities.



VIEW OF PLATFORM

TYPE SHBc24

#02-28,
#03-28,
#04-28
2 JALAN MAT JAMBOL



VIEW OF PLATFORM

TYPE SHBc24

#05-36
2 JALAN MAT JAMBOL



KEY PLAN

Scale: 1:1000



Dissemination: This document is for information only and should not be used for any purpose without the express written consent of the relevant authorities.



5th Storey
KEY PLAN

Scale: 1:1000



Dissemination: This document is for information only and should not be used for any purpose without the express written consent of the relevant authorities.



VIEW OF PLATFORM

TYPE SHBc25

#02-27,
#03-27,
#04-27
2 JALAN MAT JAMBOL



VIEW OF PLATFORM

TYPE SHBc25

#05-35
2 JALAN MAT JAMBOL



KEY PLAN

This key plan is not to scale



Disclaimer: The above plan is intended for information only and should not be used for any other purpose without the consent of the developer.



5th Storey KEY PLAN

This key plan is not to scale



Disclaimer: The above plan is intended for information only and should not be used for any other purpose without the consent of the developer.



TYPE ShBc26

#02-26,
#03-26,
#04-26
2 JALAN MAT JAMBOL



VIEW OF PLATFORM



TYPE ShBc26

#05-34
2 JALAN MAT JAMBOL



VIEW OF PLATFORM



KEY PLAN

1:000 (1:1000 TO 1:2000)



REVISION: THE LATEST PLAN IS VALID.
IF ANY AMENDMENT IS MADE TO THE PLAN, IT IS THE RESPONSIBILITY OF THE CLIENT.



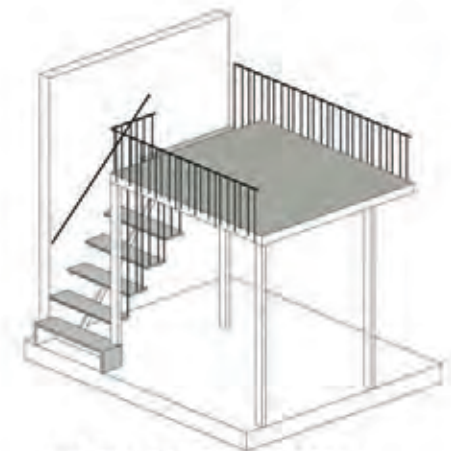
5th Storey

KEY PLAN

1:000 (1:1000 TO 1:2000)



REVISION: THE LATEST PLAN IS VALID.
IF ANY AMENDMENT IS MADE TO THE PLAN, IT IS THE RESPONSIBILITY OF THE CLIENT.



VIEW OF PLATFORM

TYPE SHBc27

#03-16,
#04-14, #04-15, #04-16,

2 JALAN MAT JAMBOL



VIEW OF PLATFORM

TYPE SHBc27

#05-18, #05-19, #05-20

2 JALAN MAT JAMBOL



KEY PLAN

This key plan is not to scale



DISCLAIMER: This shall also be subject to any amendments as may be approved by the relevant authorities



5th Storey

KEY PLAN

This key plan is not to scale



DISCLAIMER: This shall also be subject to any amendments as may be approved by the relevant authorities



5th STOREY

TYPE SHB1

#05-13

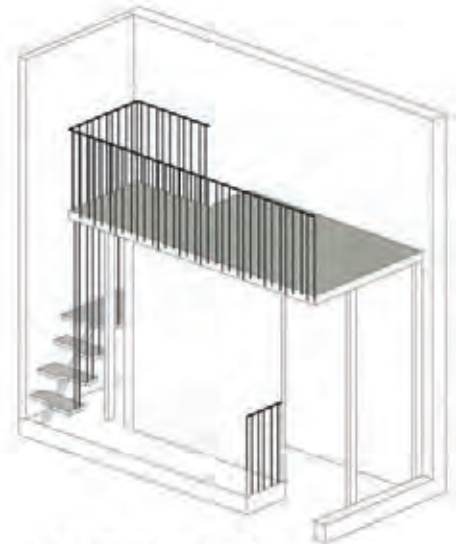


AC LEDGE ABOVE

ATTIC



PLATFORM FURNITURE



VIEW OF PLATFORM



5th STOREY

TYPE SHB1

#05-05
#05-14, #05-24

2 JALAN MAT JAMBOL

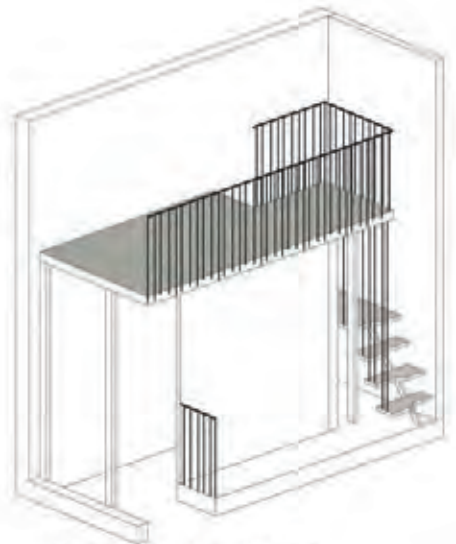


AC LEDGE ABOVE

ATTIC



PLATFORM FURNITURE



VIEW OF PLATFORM



KEY PLAN

Scale 1:500



Direction: (The arrow shows the direction to the building. The compass will show the correct orientation.)



5th STOREY

TYPE SHB1a

#05-09



5th STOREY

TYPE SHB2

#05-06

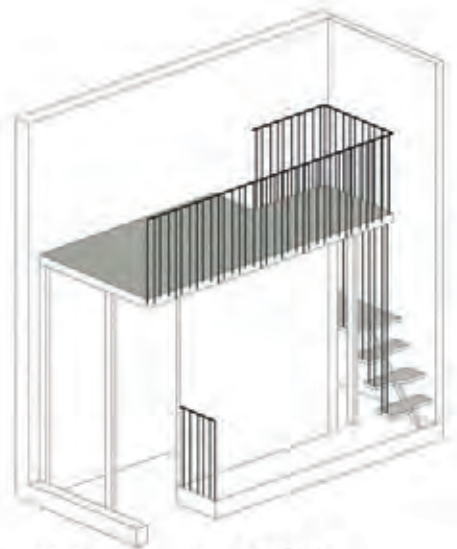
2 JALAN MAT JAMBOL



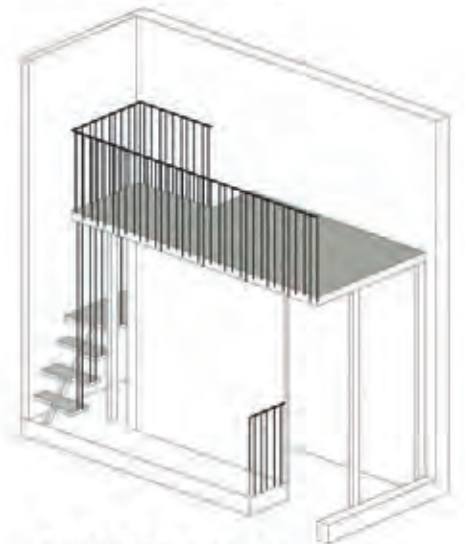
ATTIC



ATTIC



VIEW OF PLATFORM



VIEW OF PLATFORM

11	12	13	14	15	16	21	22	23	24	25	26
10						17	18	19	20		27
9											28
8											29
7											30
6		1						36			31
5		2						35			32
4		3						34			33

KEY PLAN

(Scale: 1:1000)



© 2015 by the developer. All rights reserved.
 No part of this publication may be reproduced without the prior written permission of the developer.



5th STOREY

TYPE SHB3

#05-07

2 JALAN MAT JAMBOL

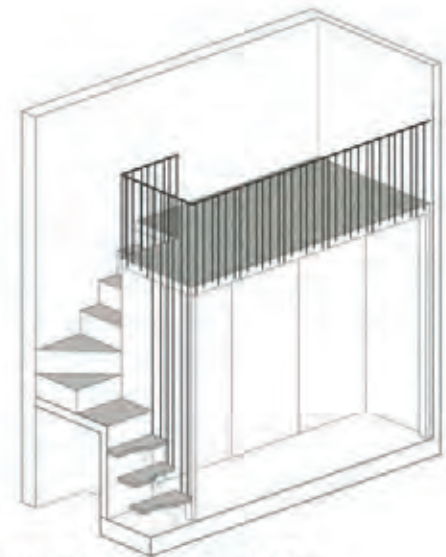


ATTIC

AC LEDGE ABOVE



PLATFORM FURNITURE



VIEW OF PLATFORM



5th STOREY

TYPE SHB3

#05-08

2 JALAN MAT JAMBOL

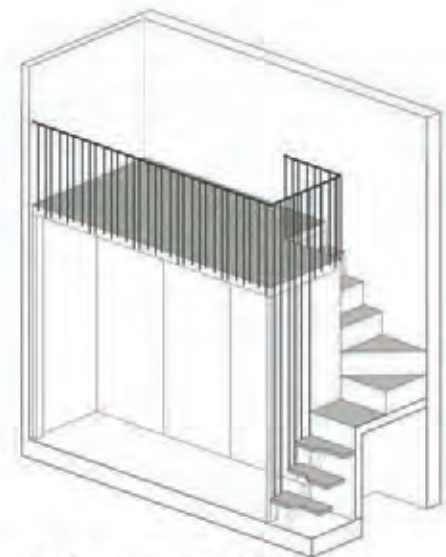


ATTIC

AC LEDGE ABOVE



PLATFORM FURNITURE



VIEW OF PLATFORM



KEY PLAN

1:10 (1:100) (Scale 1:100)



Disclaimer: The above plan is intended for use as a guide only and is not to be used for any other purpose without the approval of the relevant authorities.



5th STOREY

TYPE SHB4

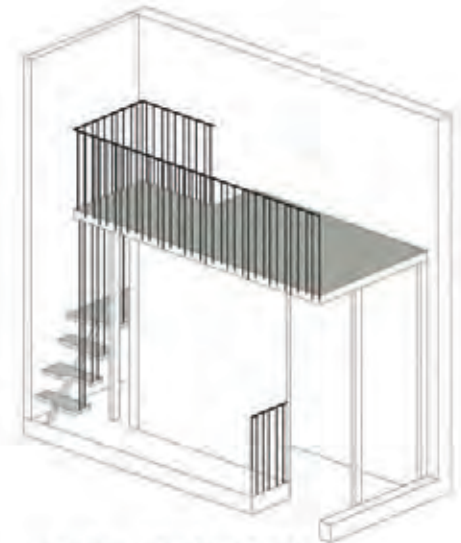
#05-10

2 JALAN MAT JAMBOL



ATTIC

AC LEDGE ABOVE



VIEW OF PLATFORM



5th STOREY

TYPE SHB5

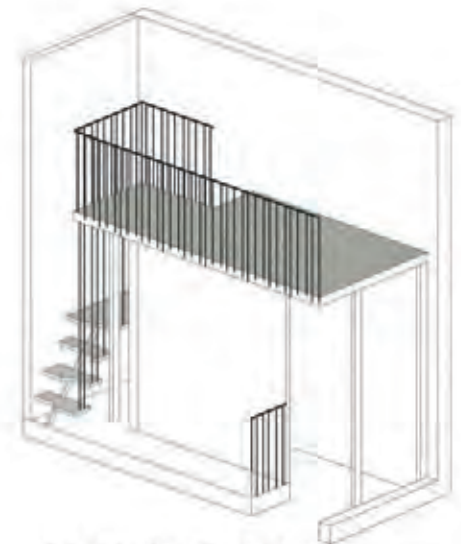
#05-11

2 JALAN MAT JAMBOL



ATTIC

AC LEDGE ABOVE



VIEW OF PLATFORM



KEY PLAN

2015 100% 1:1000 1:1000 1:1000



100% 1:1000 1:1000 1:1000
 To any conditions, we and its members do
 not warrant or guarantee.



5th STOREY

TYPE SHB9

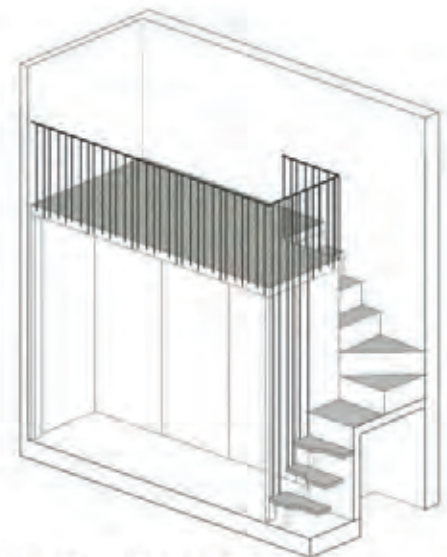
#05-27

2 JALAN MAT JAMBOL



ATTIC

AC LEDGE ABOVE



VIEW OF PLATFORM



5th STOREY

TYPE SHB10

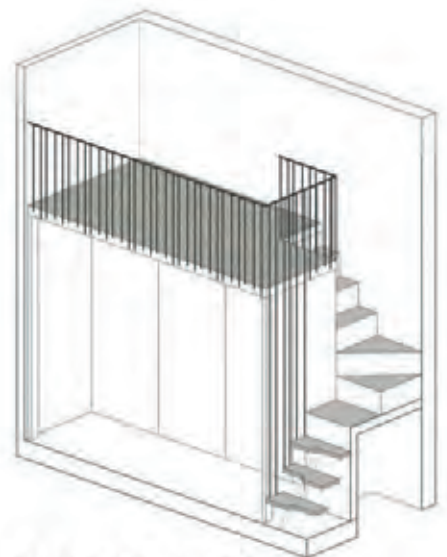
#05-30

2 JALAN MAT JAMBOL



ATTIC

AC LEDGE ABOVE



VIEW OF PLATFORM

11 12 13 14 15 16 21 22 23 24 25 26

10						27
9		17	18	19	20	28
8						29
7						30
6	1			36		31
5	2			35		32
4	3			34		33

KEY PLAN

(This key plan is not to scale)



Customer: The above floor plan is subject to any amendments we may be advised by the relevant authorities.



5th STOREY

TYPE SHB11

#05-31

2 JALAN MAT JAMBOL

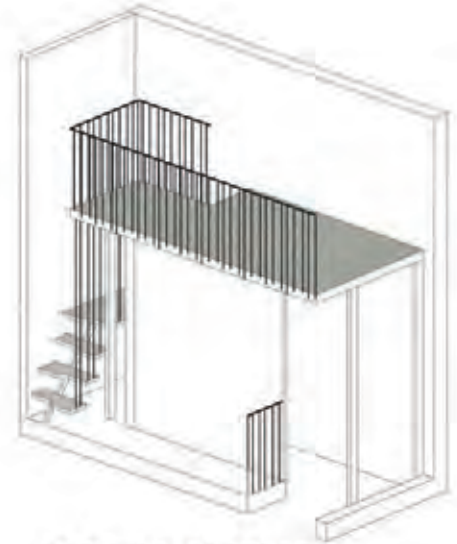


ATTIC

AC LEDGE ABOVE



PLATFORM FURNITURE



VIEW OF PLATFORM



KEY PLAN

This key plan is not to scale



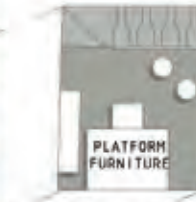
1:1000
 All drawings are subject to change without notice.
 For more information, please contact us at: 314-9999999999999999



5th STOREY



ATTIC



VIEW OF PLATFORM

TYPE SHDc1

#05-04

2 JALAN MAT JAMBOL



5th STOREY



ATTIC



VIEW OF PLATFORM

TYPE SHDc2

#05-33

2 JALAN MAT JAMBOL



KEY PLAN

Scale: 1:1000



© 2011 S&P Architects Sdn Bhd
 All rights reserved. No part of this publication may be reproduced without the prior written consent of S&P Architects Sdn Bhd.

F a r E a s t
SO / HO
S p a c e E v o l v e s .

Your SOHO lifestyle begins here

Far East Organization is the only developer in the world to win
10 FIABCI Prix d'Excellence awards, the highest honour in international real estate.

DISCLAIMER: The information contained herein is subject to change and cannot form part of an offer or contract. While every reasonable care has been taken in providing this information, the developer or its agent cannot be held responsible for any inaccuracies. Whilst we believe the contents of this brochure to be correct and accurate at time of print, they are not to be regarded as statements or representations of fact. Illustrations in the brochure are artist's impressions, which serve only to give an approximate idea of the project. All artist's impressions and all plans are subject to any amendments as may be approved by the relevant authorities.

The developer reserves any and all copyright, design and other proprietary rights in and to this document (or any part thereof) including all or any part of the information, material or artwork contained therein. Unless otherwise expressly agreed to in writing, this document or any part thereof may not be copied, modified, distributed, reproduced or reused without the express written consent of the developer.

Developer: JU-I Properties Pte. Ltd. (198101697R) • Licence No.: C1128 • Tenure: Freehold • Encumbrances: Mortgage ID/978229T in favour of DBS Bank Ltd. • Land Description: Lot 1644P Mk 3 at Jalan Mat Jambol/Pasir Panjang Road • Expected Vacant Possession Date: 31 Dec 2018 • Expected Legal Completion Date: 31 Dec 2021

F a r E a s t

SO / HO

S p a c e E v o l v e s .